

DM306X series 6½ Digital Multimeter

True 6½ digits resolution
50 K rdgs/s Sample Rate
32-Channel Multiplexer Module



Product Dimension: Width×Height×Depth=232mm×107mm×291mm Weight: 2.5 kg

► Application Areas

- Manufacturing Test
- Signal Monitoring
- High Speed, High Resolution Data Acquisition
- Aging Test
- User Defined Test (Support most sensors)

► Features and Benefits

1. True 6½ digits resolution (2,400,000-count)
2. Up to 50 K rdgs/s Sample Rate, 512K rdgs of Non-volatile Memory and 2M rdgs of Volatile Memory
3. Patented Any Sensor test capability
4. Up to 32 Channels Multiplexer Module: Data acquisition, scanning and programmable automatic measurements
5. 256×64 pixels LCD display, to support multi-display and screen menu
6. Connectivity: RS-232, USB Host, USB Device, GPIB (optional), LAN (optional)

Model	DM3061	DM3062	DM3064
Reading Resolution	6½ digits		
Connectivity	RS-232, USB Host, USB Device	Plus LAN and GPIB	Plus LAN, GPIB and Multiplexer Module

► Specifications

Measurement Function	Range	Frequency Range/ Test Current	Accuracy:
			1 Year±(% of reading + % of range)
DC Voltage	200 mV~1000 V		0.0078+0.0007
AC Voltage (True RMS)	200 mV~750 V	3 Hz~300 kHz	0.11+0.07
DC Current	2 mA~10 A		0.073+0.030
AC Current (True RMS)	20 mA~10 A	3 Hz~10 kHz	0.2+0.25

RIGOL Distributor:



MCS Test Equipment Ltd
Unit 5-6 Station Yard,
Llanrwst, Conwy,
North Wales,
LL26 0EH

Tel: 08453 62 63 65
Fax: 08453 62 36 16

Email: sales@mcs-testequipment.co.uk
Web: www.mcs-testequipment.co.uk

Measurement Function	Range	Frequency Range / Test Current	Accuracy:
			1 Year±(% of reading + % of range)
Resistance(2-wire and 4-wire)	200 Ω~100 MΩ		0.015+0.001
Capacitance	2 nF~200 uF		1+0.5
Diode	2.4 V	1 mA	0.010+0.050
Continuity	2000 Ω	1 mA	0.010+0.050
Frequency,Period Accuracy	200 mV~750 V	3 Hz~300 kHz	0.007
±(% of reading)	20 mA~10 A	3 Hz~10 kHz	0.007

Note: All the indicators are the typical value under standard test situation

► Other Parameters

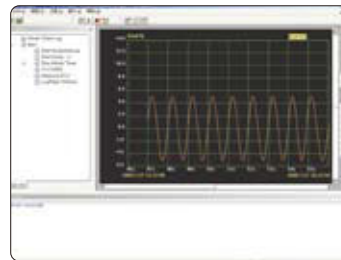
24 Measurement Functions	DC voltage and current, AC voltage and current, 2-wire and 4-wire resistance, Capacitance, Continuity Test, Diode Test Frequency, Period, Ratio Test and Any Sensor Test
	Math functions: Max, Min, Avg, histogram, High Limit, Low Limit, dBm, dB, Null
	Data acquisition: data logging, scanning
Other Functions	Built-in memories: Store up to 10 Setups, 10 Data records and 10 Sensor descriptions
	True RMS AC voltage and current
	Input impedance >10 GΩ
	DC voltage range up to 48 V (± 24 V)
Application Software	UltraLogger: For scan measurement and data acquisition control
	UltraSensor: For any sensors measurement
Maximum Input Safety	DC voltage 1,000 VDC, AC voltage 750 Vrms AC, DC and AC max external current 10 A, internal 12 A double fuses
Shock and Vibration	Measurement of CAT II 300V, CAT I 1000V, Pollution level 1
Power Supply	MIL-T-28800, type III, class 5 (only sine) AC:100V-240V±10%, 45Hz-65Hz; 20 VA Max

► Multiplexer Module

The module provides up to 32 channels of acquisition. The easy to use software allows the user to scan any or all of the 32 channels and place the data into the memory.



Multiplexer Module



UltraLogger Software Interface